

ジョン・オージェリ

次長



パリ・イル・ド・フランス
デジタル通信技術大学

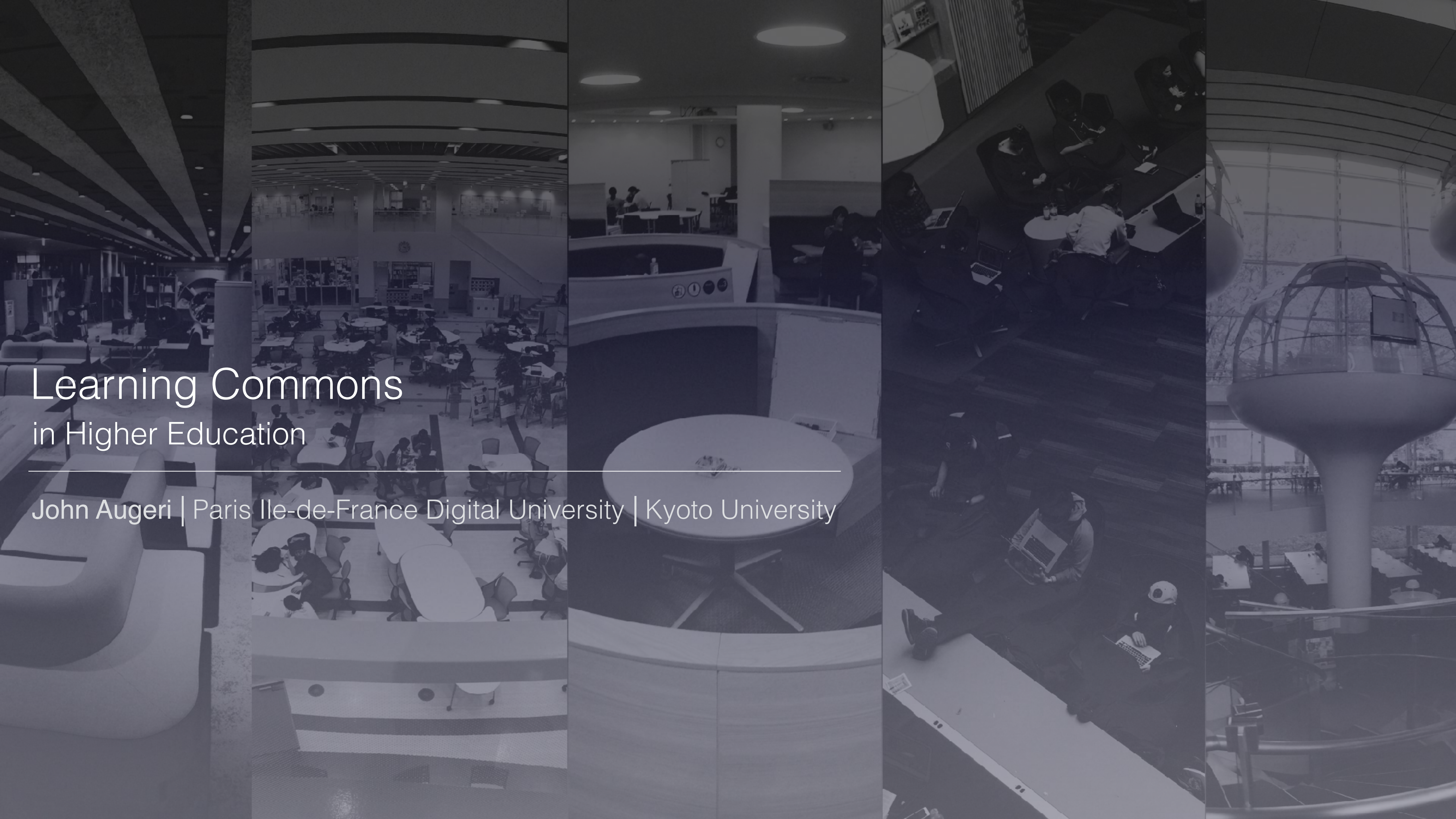
勤務先住所 : 90 rue Tolbiac, bureau A804
75634 Paris cedex 13 - France

電話番号 : (33) 1 44 07 87 85

携帯電話番号 : (33) 6 47 54 71 97

email : john.augeri@unpidf.fr

email : john.augeri@unpidf.fr



Learning Commons in Higher Education

John Augeri | Paris Ile-de-France Digital University | Kyoto University



パリ・イル・ド・フランス デジタル大学



京都大学



フランスのMEXT

EDUCAUSE

Educause Learning Spaces
Constituent Group

Research Project

International comparative study of Learning Spaces
Policies, Trends, Design Principles and Impacts on the Teaching & Learning Practices

6 universities
4 pro associations

3 universities

10 universities
3 pro associations

40 universities
3 pro associations
1 ministry

3 universities

3 universities

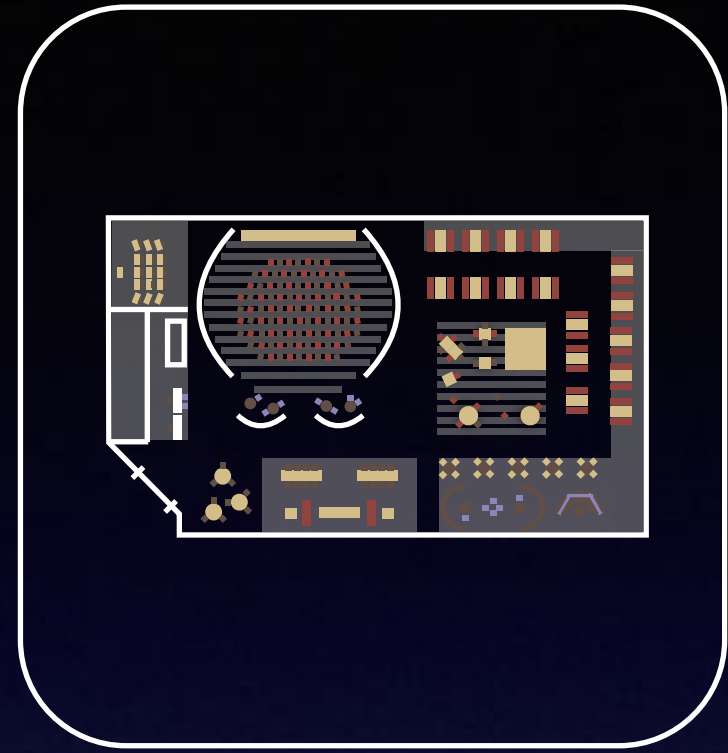
1 university

3 universities





Terminology



Layout



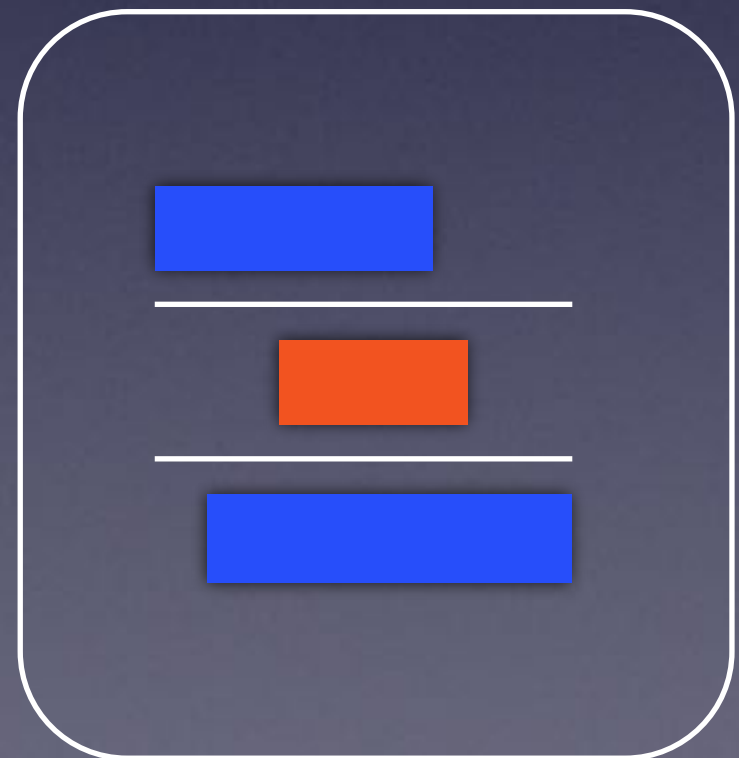
IT/ICT



Bring Your Own Device



Localization



Governance



Design & evaluation tools



Community interactions



New services



Teaching & Learning practices

Active Learning Classrooms

Trends & Impacts on the design principles and the practices

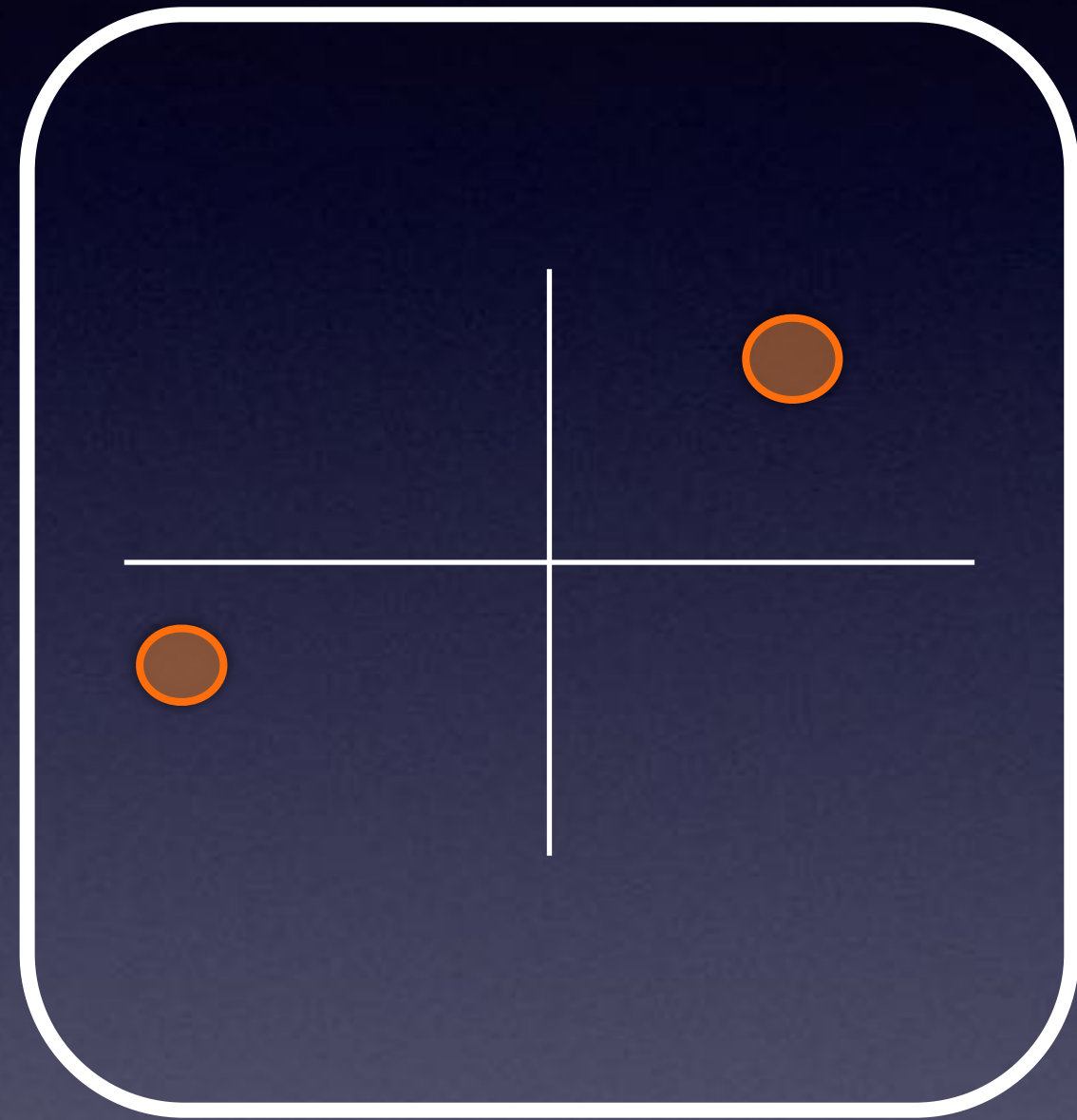
A white rounded square outline containing the text "BYOD" in white capital letters.

BYOD

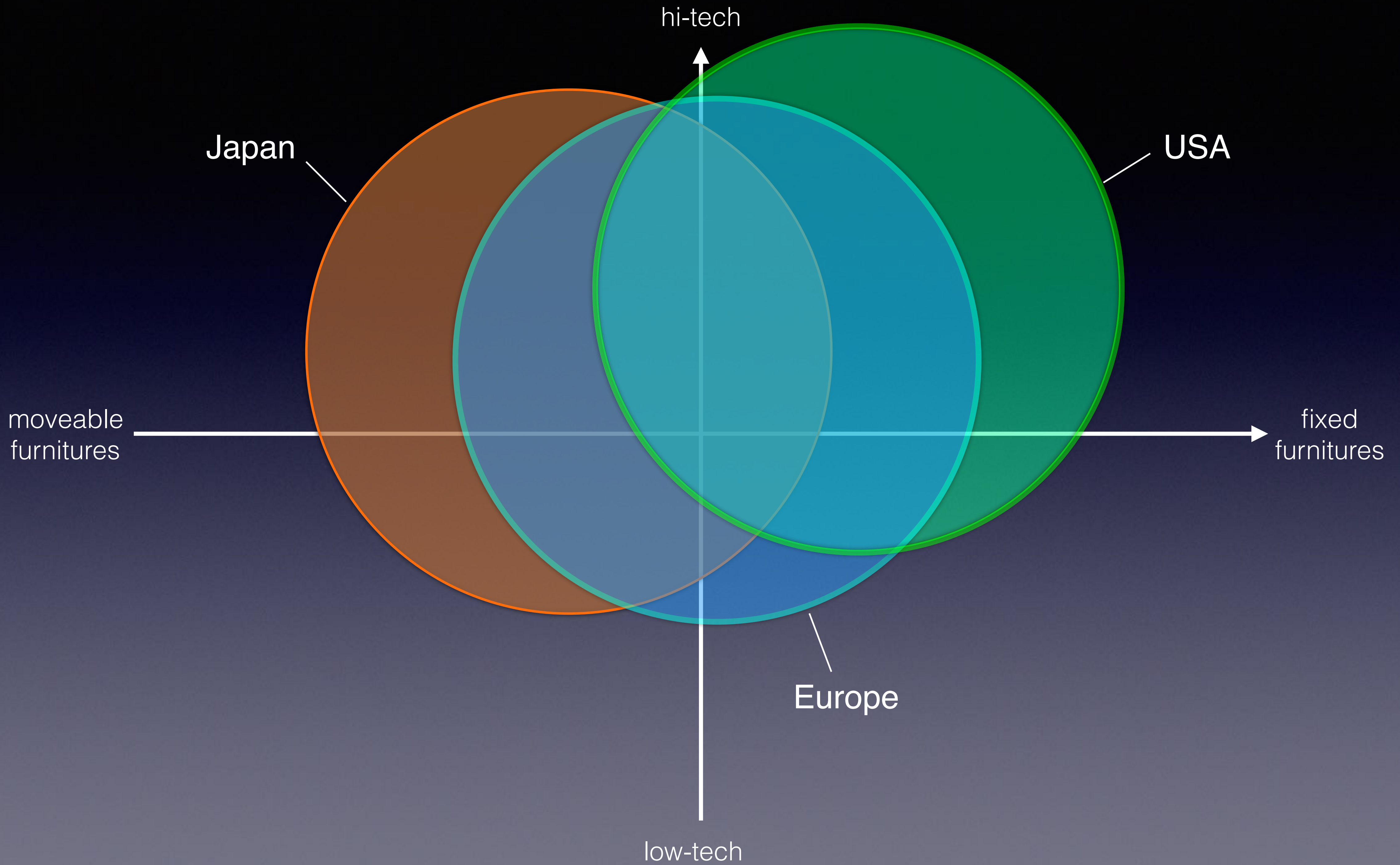
Bring Your
Own Device



			
Types of BYOD	Laptop to BYOE	Laptop	Smartphone to Laptop
Reality & Institutional Context	Bottom-Up	Bottom-Up	Top-Down



High-tech / Low-tech
Moveable / Fixed





New & redesigned
Teaching & Learning
Practices



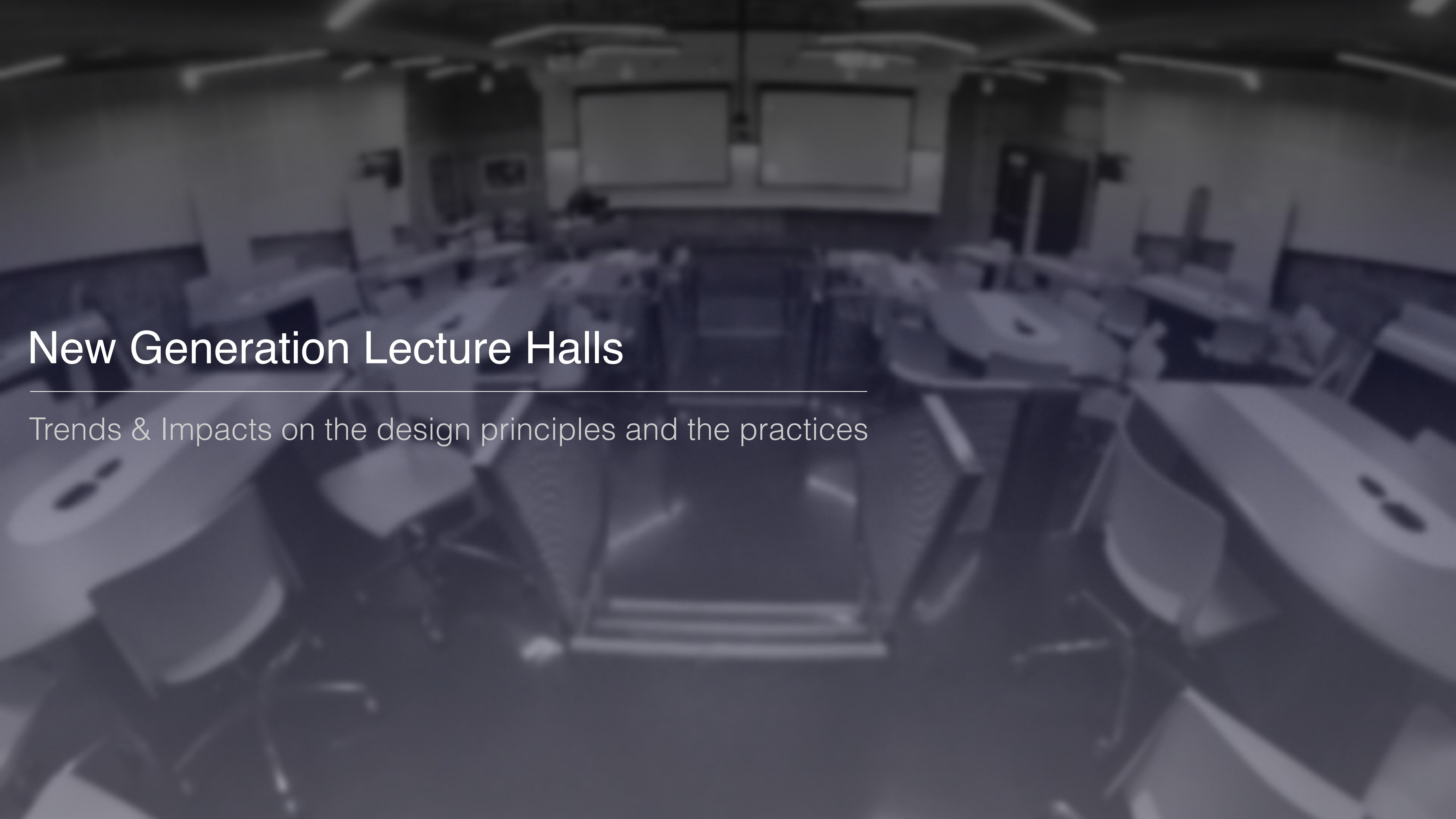
Bring Your Own Device
& Cloud



High / Low tech
Flexible / Fixe



New & redesigned
Teaching/Learning Practices



New Generation Lecture Halls

Trends & Impacts on the design principles and the practices

Moving to the big picture

Learning Centers and Learning Commons design & services



WiFi + Power



BYOD



Assistance



Collaborative Spaces



Relaxing Areas



Other Services

Design Tips, Tools & Strategies

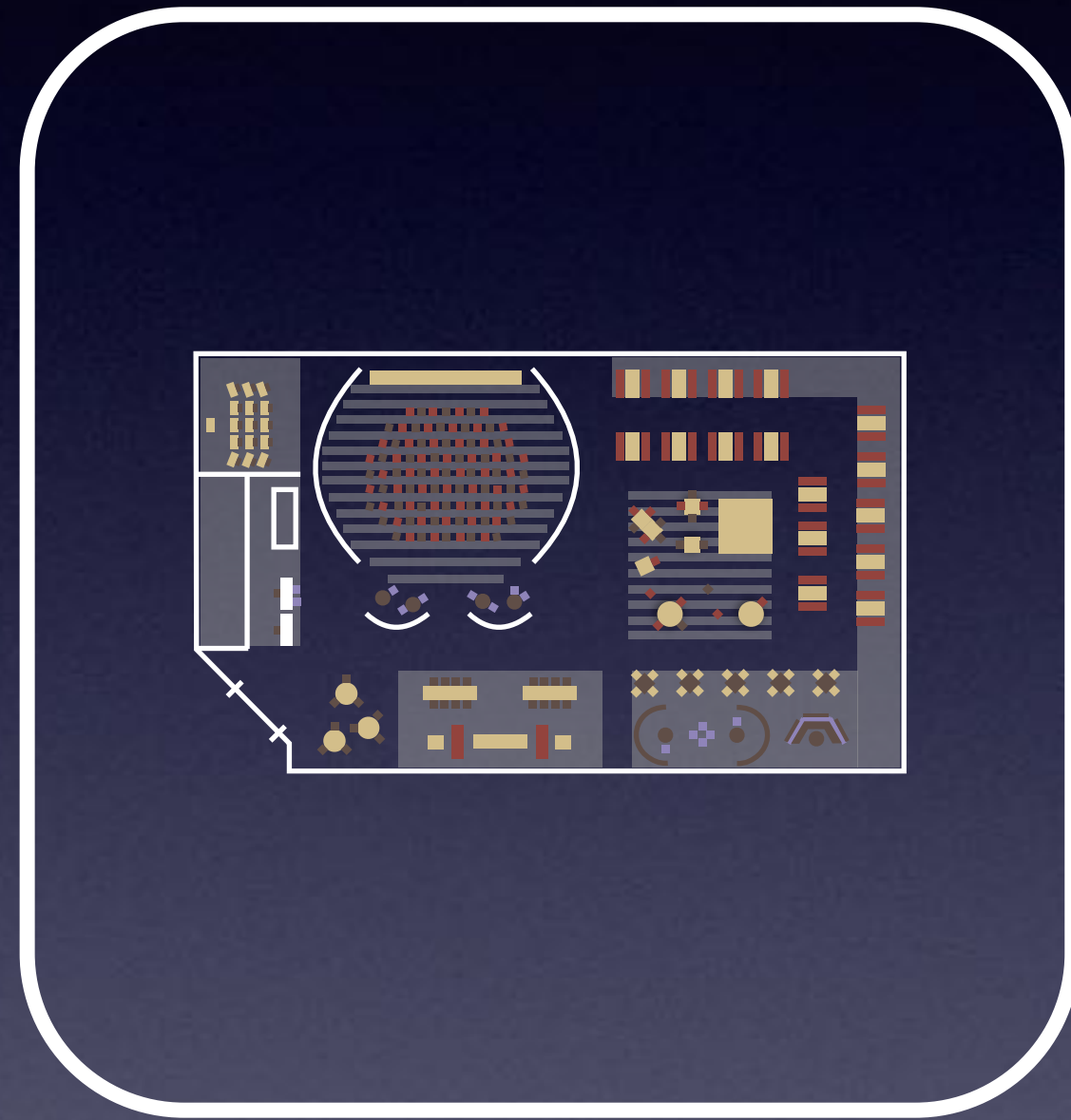
For Learning Spaces Project Management & Evaluation



Localization
Centralized or not ?



Various Heights
for furniture



Zoning



Design & Evaluation Tools

FLEXspace

Flexible Learning Environment eXchange

EDUCAUSE

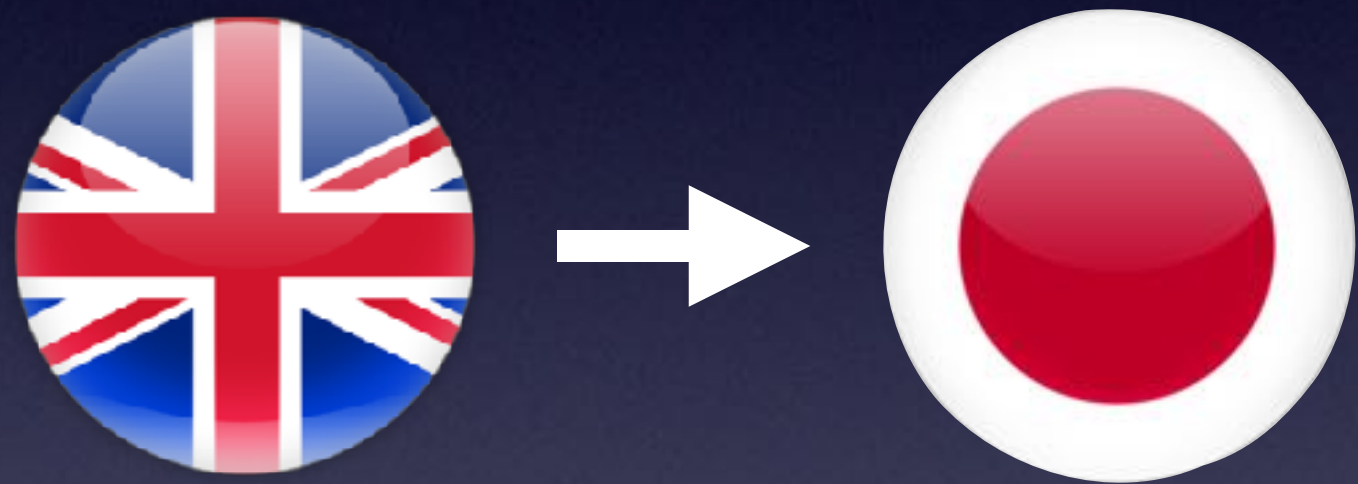
Educause Learning Spaces
Constituent Group

LSRS

Learning Spaces Rating System

EDUCAUSE

Educause Learning Spaces
Constituent Group



Summer 2017

LSRS

Learning Space Rating System

習スペースの評価システム

日本語版の作成

john.augeri@unpidf.fr

Paris Ile-de-France Digital University | Kyoto University